

Name: _____

Date: _____

LINES: Every Good Boy Does Fine

SPACES: FACE

Directions: Fill in the spaces below the staff with the correct letter.

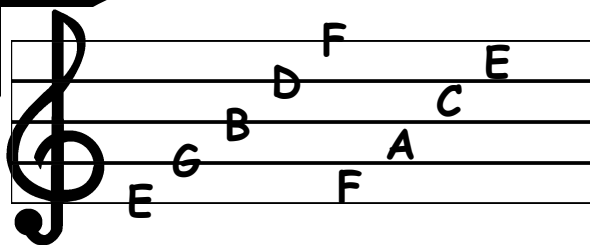
Four musical staves for note identification. Each staff has a treble clef and a key signature of one sharp (F#). The notes are placed on the lines and spaces of the staff, and the corresponding letter is written below the staff.

Staff 1: Notes are on the lines (F#, C#, G#, D#, A#) and spaces (B, E, A, D, G). Letters to fill in: F, C, G, D, A, B, E, A, D, G.

Staff 2: Notes are on the lines (F#, C#, G#, D#, A#) and spaces (B, E, A, D, G). Letters to fill in: F, C, G, D, A, B, E, A, D, G.

Staff 3: Notes are on the lines (F#, C#, G#, D#, A#) and spaces (B, E, A, D, G). Letters to fill in: F, C, G, D, A, B, E, A, D, G.

Staff 4: Notes are on the lines (F#, C#, G#, D#, A#) and spaces (B, E, A, D, G). Letters to fill in: F, C, G, D, A, B, E, A, D, G.



Name: _____

Date: _____

LINES: Every Good Boy Does Fine
SPACES: FACE

Directions: Fill in the spaces below the staff with the correct letter.

ANSWER KEY

Four musical staves with notes and corresponding letters below them:

Staff 1: G C E F B F A D G D

Staff 2: C F C D B G E G F D

Staff 3: B A G C D E E F G B

Staff 4: F E D B A G D E D B