

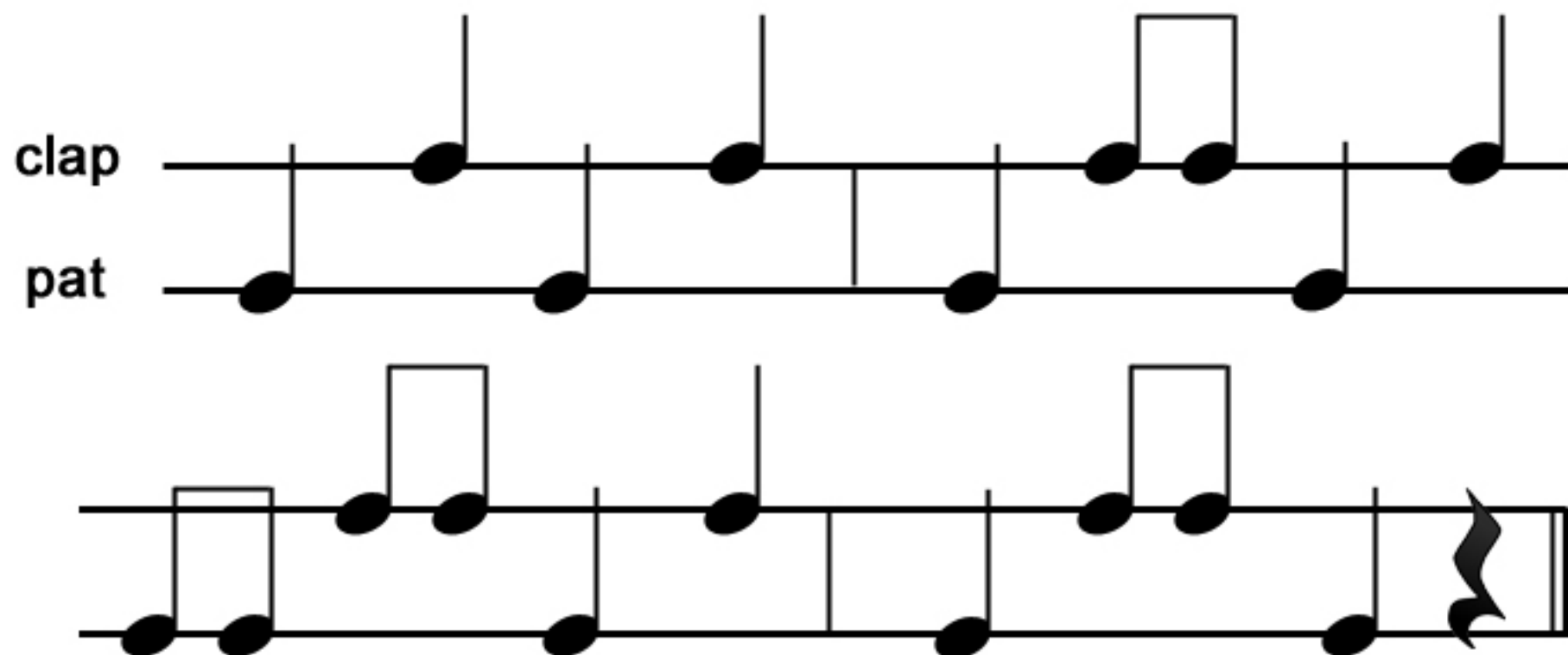


# BODY PERCUSSION CHARTS

IN THE STYLE OF ORFF/KEETMAN

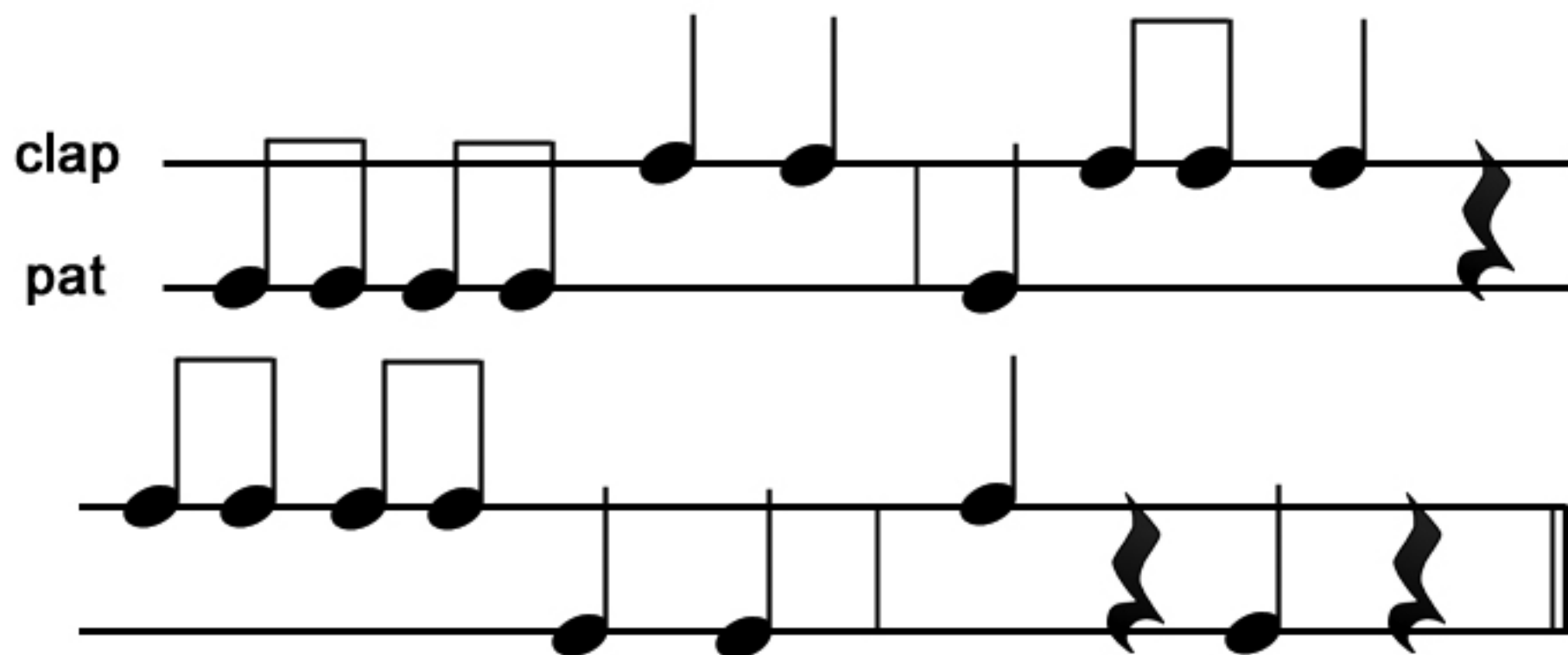
ALL ORIGINAL COMPOSITIONS  
MUSIC WITH MRS. TANENBLATT

1



BODY PERCUSSION CHARTS

2

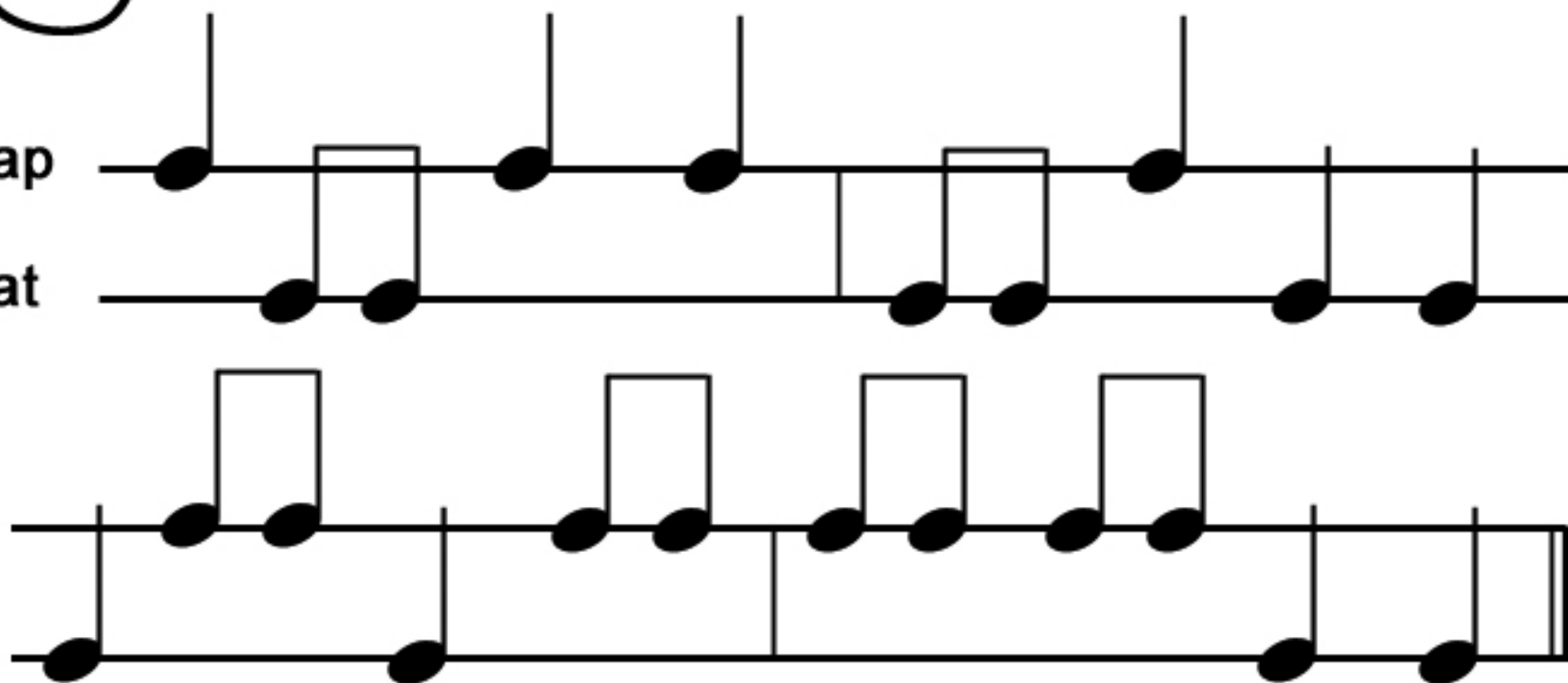


BODY PERCUSSION CHARTS

3

clap

pat

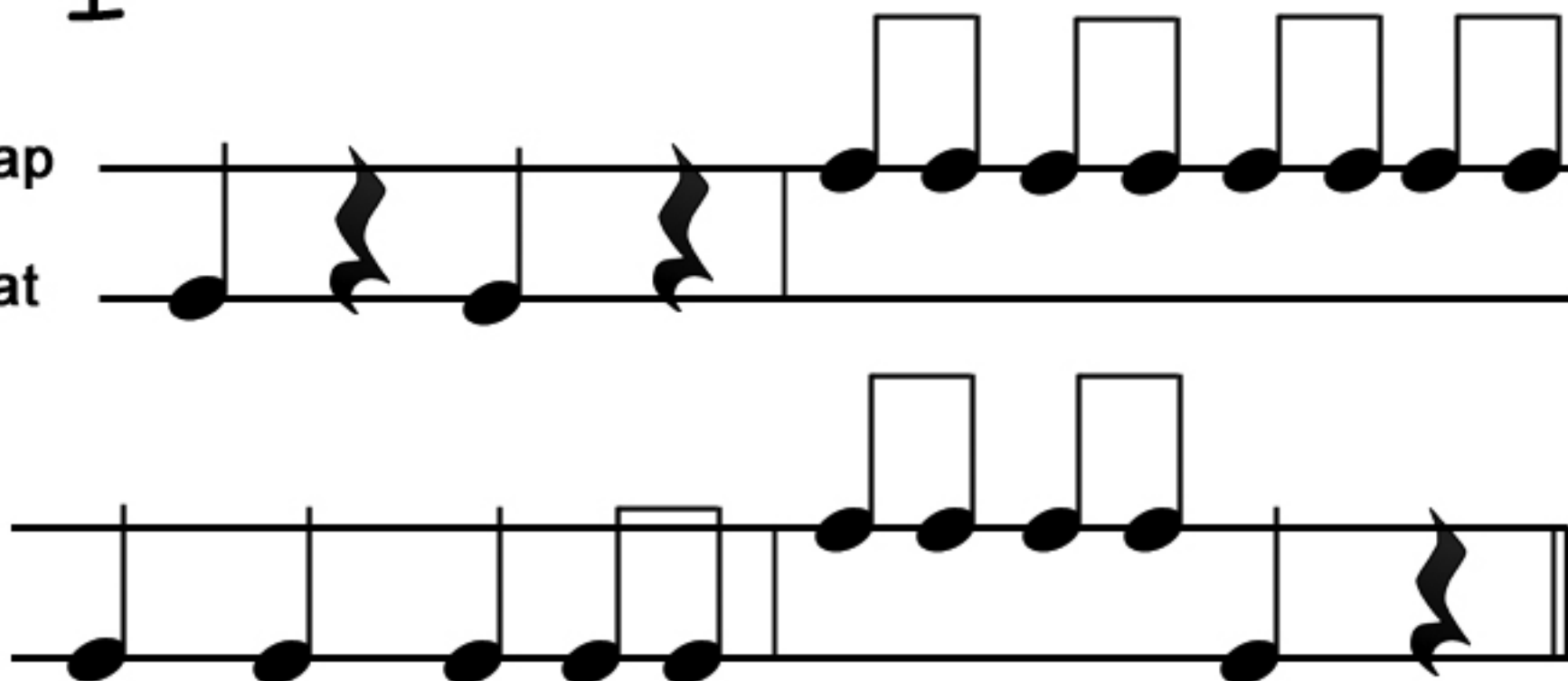


BODY PERCUSSION CHARTS

2

clap

pat

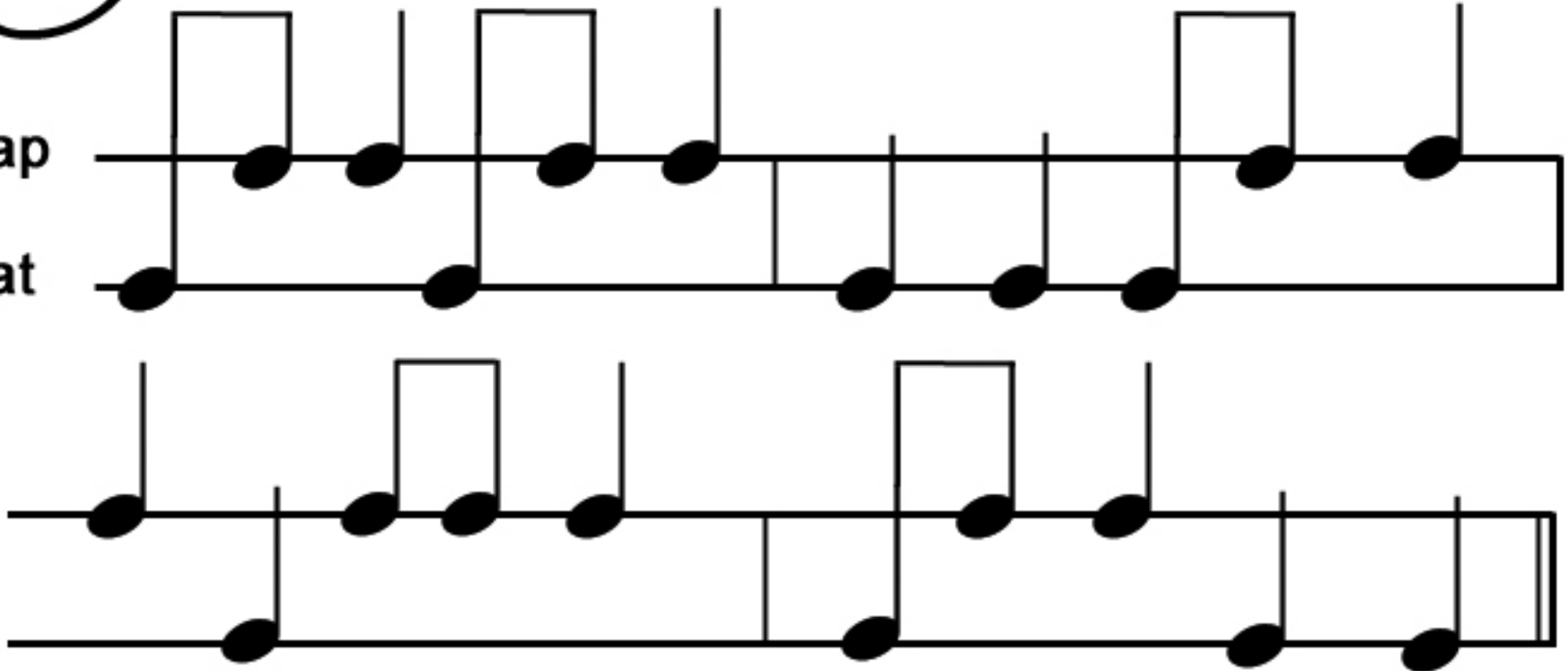


BODY PERCUSSION CHARTS

5

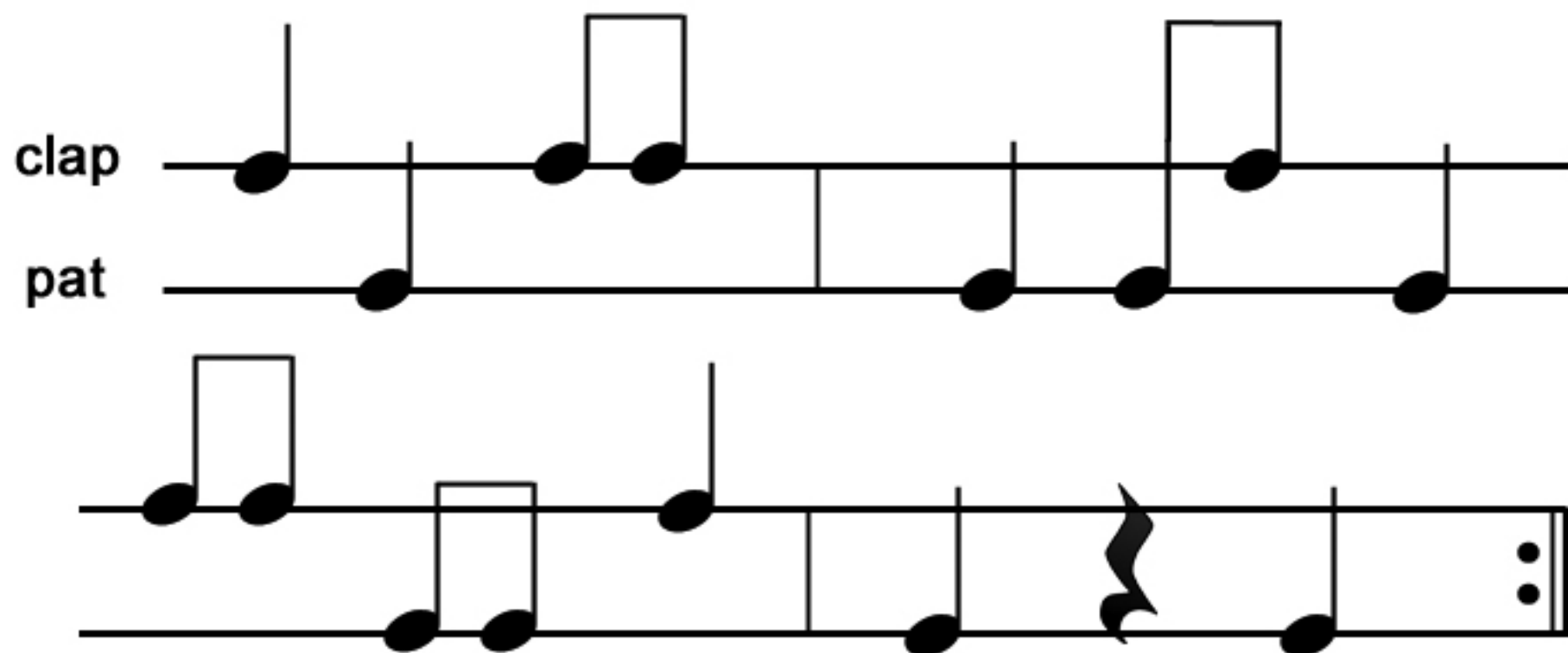
# clap

pat



## BODY PERCUSSION CHARTS

6



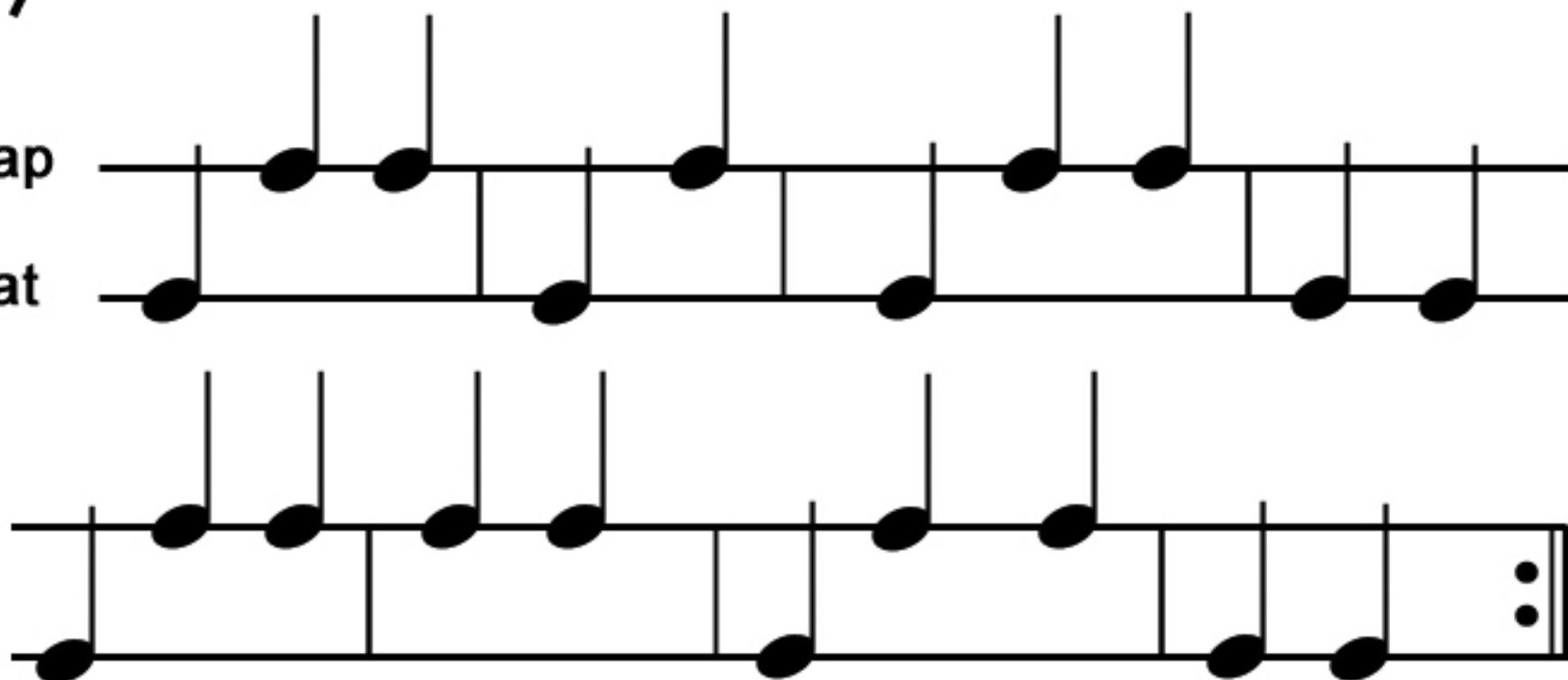
BODY PERCUSSION CHARTS



7

clap

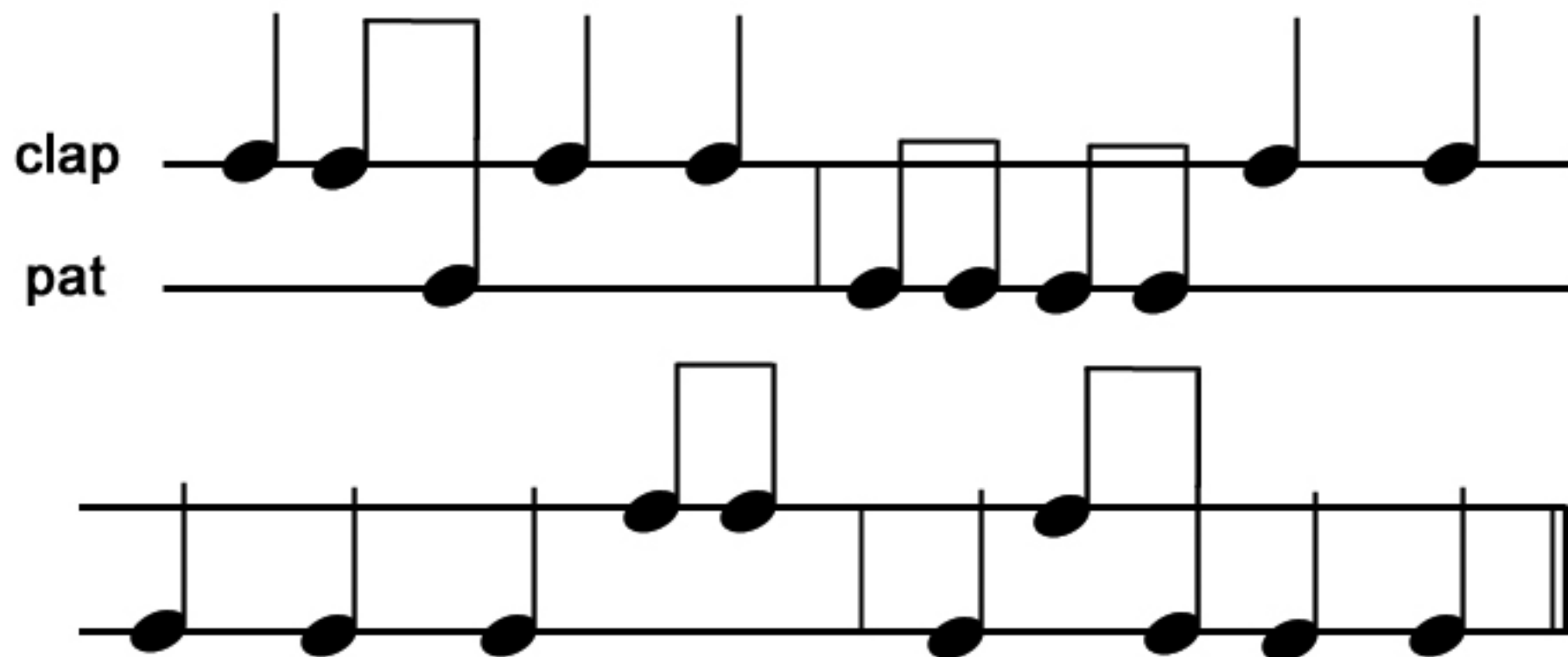
pat



BODY PERCUSSION CHARTS



8



BODY PERCUSSION CHARTS

9

clap

pat

musical notation for body percussion chart 9, showing two systems of two staves each. The first system includes a 'clap' staff and a 'pat' staff. The 'clap' staff has notes on measures 1, 2, 4, and 5, with a rectangular box above measure 2. The 'pat' staff has notes on measures 2, 4, 5, and 6. The second system has two staves with notes on measures 1, 2, 4, 5, and 6. Measure 1 has notes on both staves, with a rectangular box above the top staff. Measure 2 has notes on both staves, with a rectangular box above the top staff. Measure 4 has notes on both staves. Measure 5 has notes on both staves. Measure 6 has notes on both staves. The chart ends with a double bar line and two dots on the bottom staff of the second system.

BODY PERCUSSION CHARTS

# 10

clap

pat

stomp

The chart consists of two systems of three staves each. The first system is labeled 'clap', 'pat', and 'stomp' on the left. The 'clap' staff has a half note on the first line, a quarter note on the second line, a quarter note on the third line, a half note on the fourth line, and a quarter note on the fifth line. The 'pat' staff has a quarter note on the first line, a quarter note on the second line, a quarter note on the third line, a quarter note on the fourth line, and a quarter note on the fifth line. The 'stomp' staff has a quarter note on the first line, a quarter note on the second line, a quarter note on the third line, a quarter note on the fourth line, and a quarter note on the fifth line. The second system has three staves with the same notation as the first system. The first staff of the second system has a half note on the first line, a quarter note on the second line, a quarter note on the third line, a half note on the fourth line, and a quarter note on the fifth line. The second staff of the second system has a quarter note on the first line, a quarter note on the second line, a quarter note on the third line, a quarter note on the fourth line, and a quarter note on the fifth line. The third staff of the second system has a quarter note on the first line, a quarter note on the second line, a quarter note on the third line, a quarter note on the fourth line, and a quarter note on the fifth line. The chart ends with a double bar line and a repeat sign.

BODY PERCUSSION CHARTS

11

clap

pat

stomp

The chart consists of two systems of three staves each. The first system is labeled 'clap', 'pat', and 'stomp'. The 'clap' staff has notes on measures 1, 3, 5, and 7. The 'pat' staff has notes on measures 2, 4, and 6. The 'stomp' staff has notes on measures 1, 2, 4, and 5. The second system has no labels. Its top staff has notes on measures 1, 3, 4, and 7. The middle staff has notes on measures 2 and 4. The bottom staff has notes on measures 1, 2, 4, 6, and 7. Vertical bar lines divide the measures, and a double bar line at the end of the second system indicates the end of the chart.

BODY PERCUSSION CHARTS

# 12

clap

pat

stomp

This chart consists of two systems of three staves each. The first system is labeled 'clap', 'pat', and 'stomp' on the left. The 'clap' staff uses a five-line staff with beams to represent eighth notes. The 'pat' staff uses a four-line staff with dots for eighth notes. The 'stomp' staff uses a three-line staff with dots for eighth notes. The second system follows the same structure but lacks labels. The notation includes eighth notes, quarter notes, and half notes, with some measures containing beams to indicate eighth notes. The chart concludes with a double bar line and a decorative flourish on the right side of the second system.

BODY PERCUSSION CHARTS

# 13

clap

pat

stomp

The image shows two staves of body percussion notation. The first staff has three measures: 'clap' (half note), 'pat' (half note), and 'stomp' (half note). The second staff has three measures: 'clap' (half note), 'pat' (half note), and 'stomp' (half note). The third staff has three measures: 'clap' (half note), 'pat' (half note), and 'stomp' (half note). The fourth staff has three measures: 'clap' (half note), 'pat' (half note), and 'stomp' (half note). The fifth staff has three measures: 'clap' (half note), 'pat' (half note), and 'stomp' (half note). The sixth staff has three measures: 'clap' (half note), 'pat' (half note), and 'stomp' (half note).

BODY PERCUSSION CHARTS

12

clap

pat

stomp

The image shows two staves of body percussion notation for a 12-measure piece. The first staff is labeled 'clap', 'pat', and 'stomp'. The second staff is unlabeled. The notation uses vertical lines for downbeats and horizontal lines for sustained sounds. The first staff has a 'clap' on measure 1, a 'pat' on measure 2, and a 'stomp' on measure 3. The second staff has a 'clap' on measure 4, a 'pat' on measure 5, and a 'stomp' on measure 6. The notation continues for 12 measures in total.

BODY PERCUSSION CHARTS



THANK YOU FOR DOWNLOADING THIS PRODUCT!  
PLEASE VISIT MY TPT STORE FOR MORE  
MUSIC READING ACTIVITIES!

MUSIC WITH MRS. TANENBLATT